



PARMA
ATLANTE DI GENERE



Comune di Parma

**SEX
AND THE
CITY**



MASCULINE AS UNIVERSAL

«When planners fail to account for gender,
public spaces become male spaces by default»

Criado Perez, 2020



GENDER DIFFERENCES

Gender differences are anchored to **socially determined roles**:

Women still today the main responsible for **care work**, and therefore strictly linked to the **domestic space**;

Men mostly stereotyped in the role of **breadwinner**, and therefore more related to the **public sphere**.



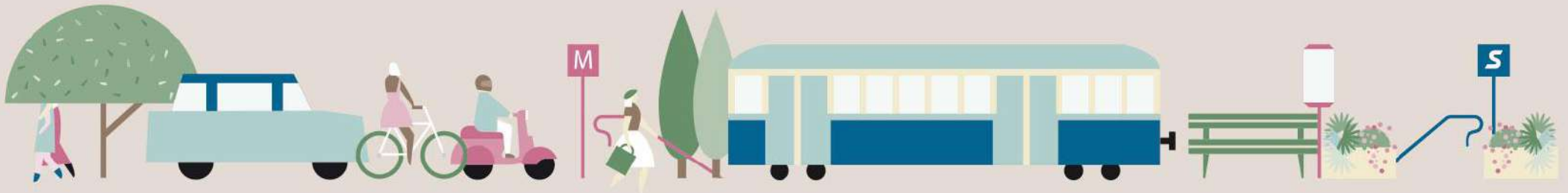
GENDER ATLAS AS A METHODOLOGY

Mapping of services, initiatives, networks active on the territory **supporting the everyday life** of women and gender minorities;

Collection of gender-disaggregated data useful for **understanding needs and perceptions**, in a gender comparison.

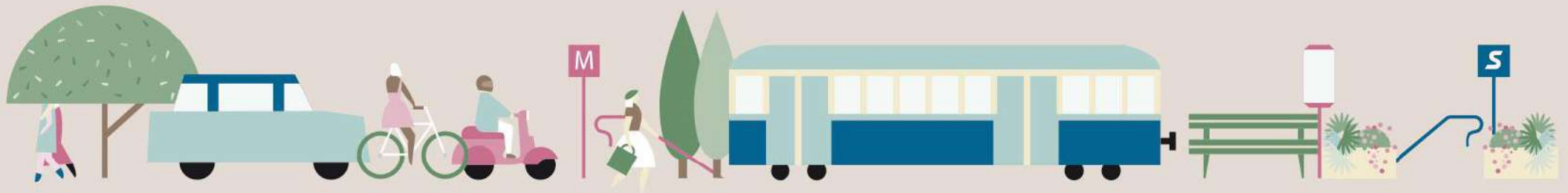
THE OBJECTIVES

- Equip local **public administration** with a tool (internal report + web app) to **guide equal opportunity policies** by highlighting strengths, gaps, unmet needs, and grassroots initiatives, and by shedding light on key issues identified by the project.



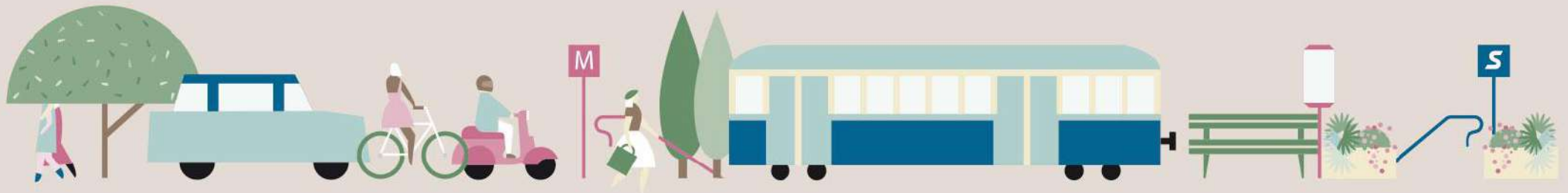
THE OBJECTIVES

- Provide women, girls, and queer individuals in Parma and its province with a **digital tool (web app)** that serves as a **guide to the city's existing services** — aimed at systematizing and organizing available resources.



THE OBJECTIVES

- Gain **deeper insights into gender disparities** and varying needs in the use of Parma and its province, and share findings to raise public awareness on these topics.



The background features a central illustration of a woman with dark hair, wearing a red top, shown in profile. Behind her are several silhouettes of other people in various shades of blue and teal, representing a diverse group of individuals.

GENDER DISAGGREGATED DATA

The dissemination of a **survey focused on everyday life**, open to all genders, is essential for obtaining **updated, gender-disaggregated data** to build an accurate profile of the local population.

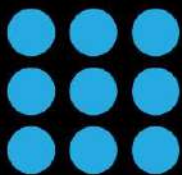
THE AREAS OF OBSERVATION

- Mobility
- Services & Health
- Violence and insecurity
- Housing
- Public representation

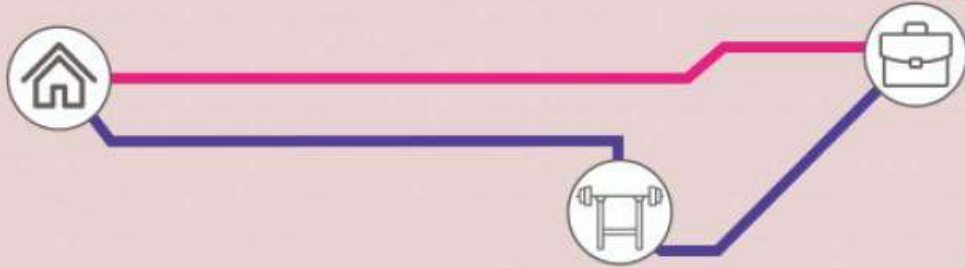




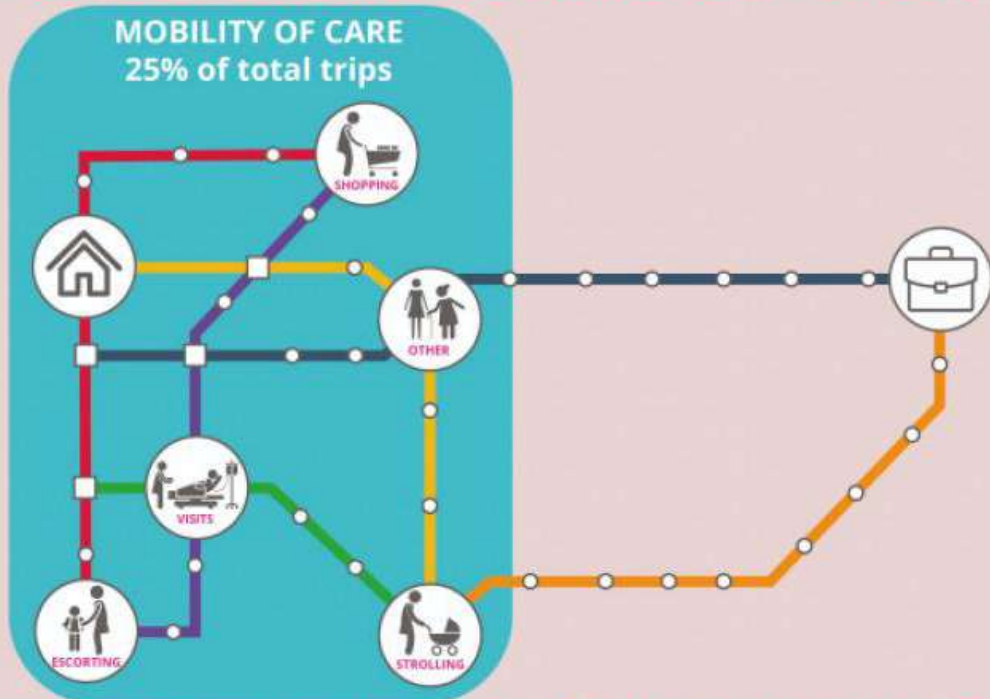
MOBILITY



PARMA
ATLANTE DI GENERE



TRIP-CHAINING



"Women's journeys are often more complex, reflecting the stratified and sometimes conflicting duties of paid and unpaid work."

Leslie Kern



INCLUSIVE MOBILITY

We observe **stairs**, **revolving doors**, **turnstiles**, lack of space for strollers, broken **elevators** and **escalators** as spies of a rejecting and **inaccessible** city for **bodies** and subjects **outside the functional paradigm**.

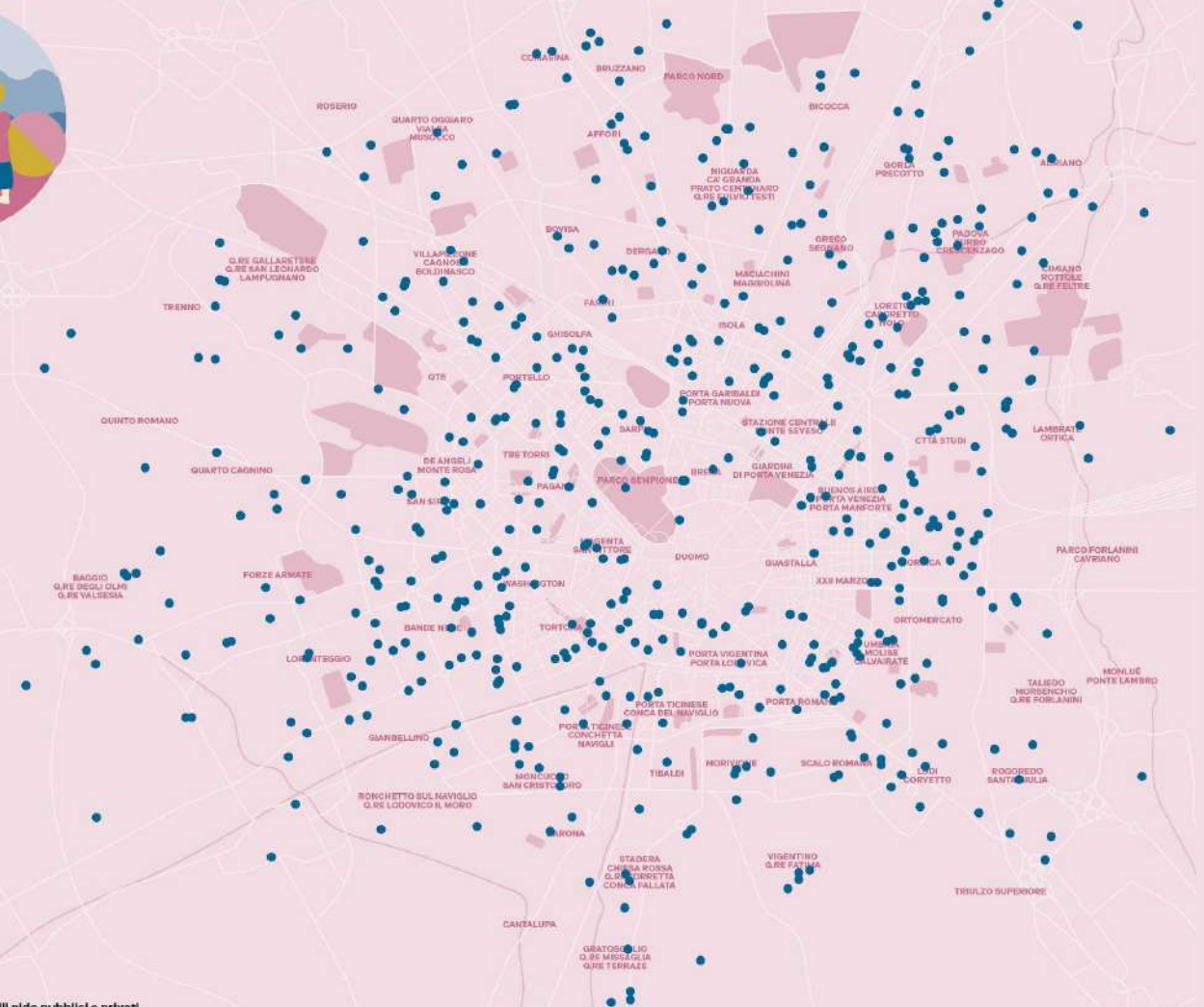


SERVICES & HEALTH

PARMA
ATLANTE DI GENERE



NURSERY SCHOOLS

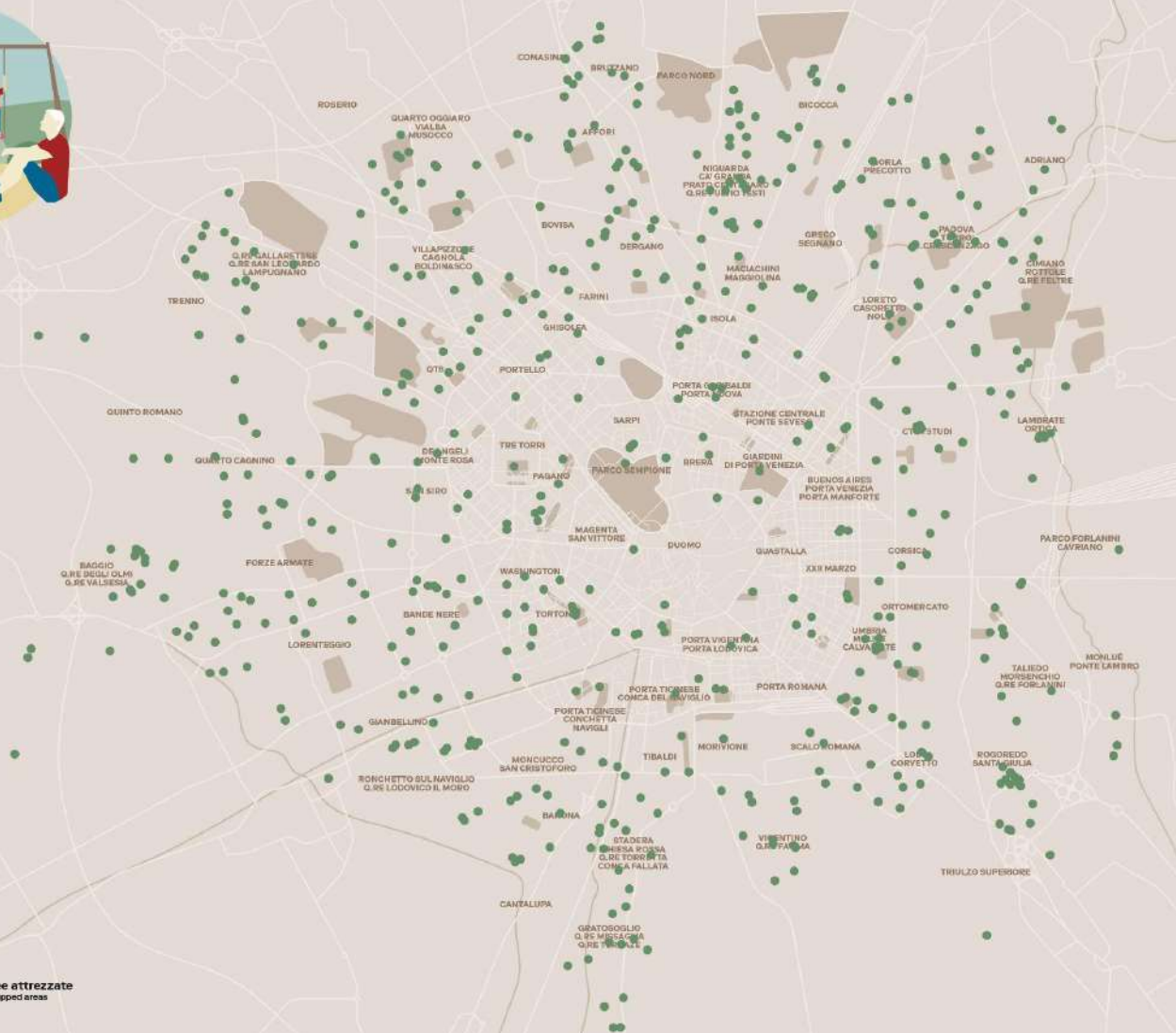




PLAY AREAS

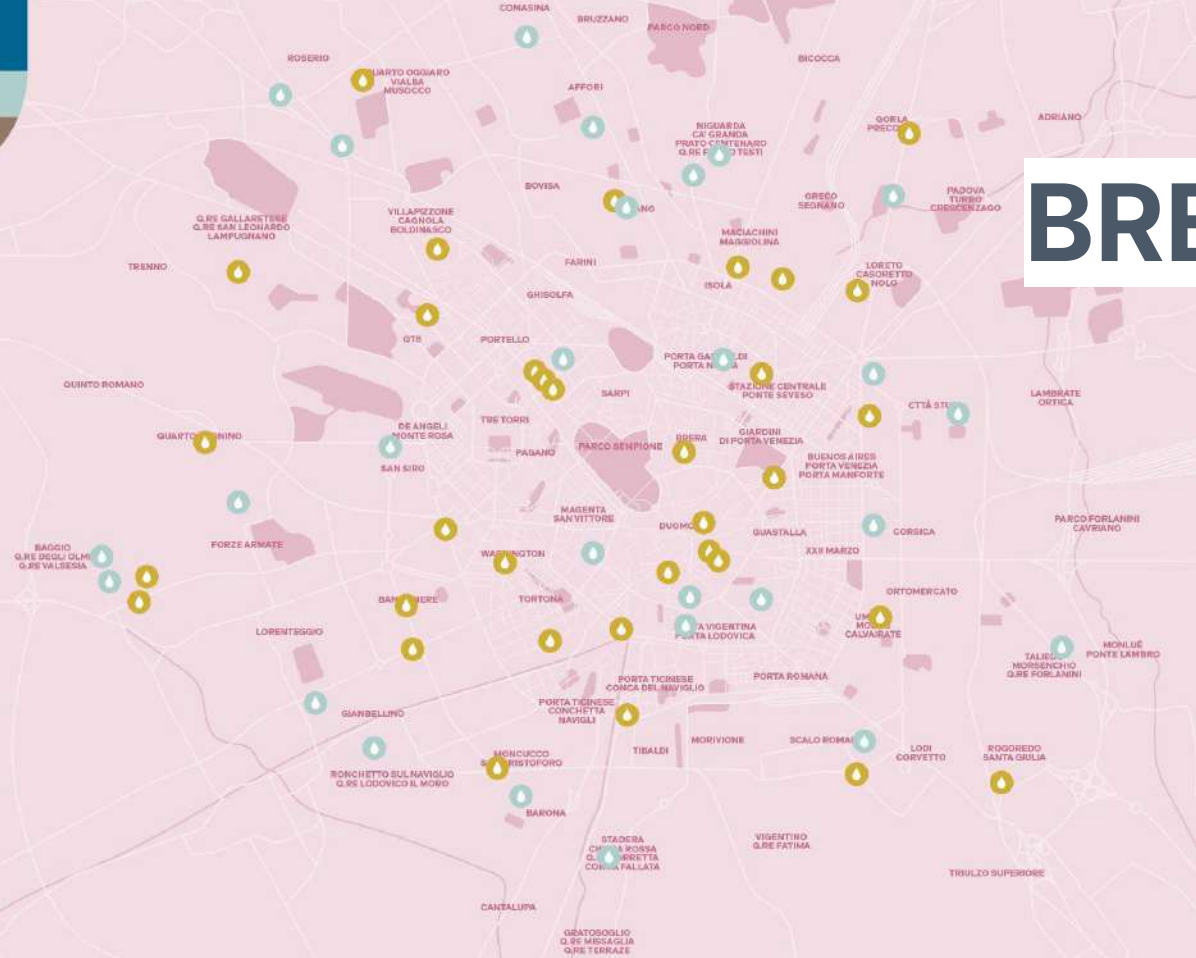
Aree gioco
Play areas

● Aree attrezzate
Equipped areas





SAFE BREASTFEEDING



Allattamento sicuro
Safe breastfeeding



Happy popping
Happy popping



Baby pit stop
Baby pit stop



GENDER AND CARE WORK

The aim is not to define a "female model" but to **observe the patterns, systems and services that practices of care** generate in public space, in order to make them **available** and feasible to anyone who takes charge of them, **regardless of gender.**



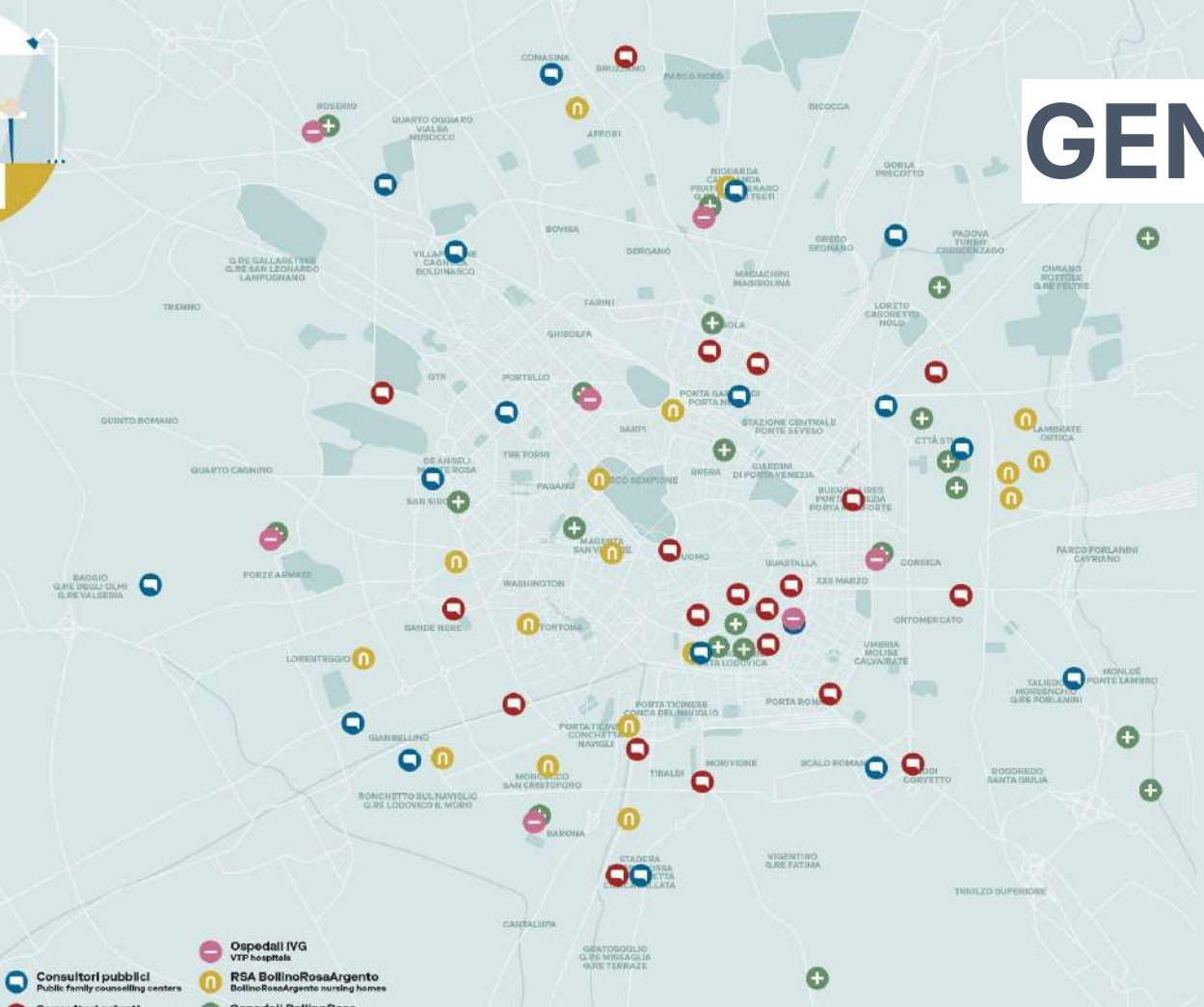
PUBLIC TOILETS



Servizi igienici pubblici
Public toilets

WC fissi
Permanent toilets

GENDER HEALTH



Servizi sanitari Gender health services

-  **Consultori pubblici**
Public family counselling centers
-  **Consultori privati**
Private family counselling centers
-  **Ospedali IVG**
VTP hospitals
-  **RSA BollinoRosaArgento**
BollinoRosaArgento nursing homes
-  **Ospedali BollinoRosa**
BollinoRosa hospitals



VIOLENCE AND INSECURITY

PARMA
ATLANTE DI GENERE



FEAR OF CRIME IN PUBLIC SPACE

Women in public space express more **fear** than men.

Adoption of routines that limit women's freedom:
'geography of women's fear', defined by **deviations in the path**, by **renunciations**, by **changes of pace**.



PERCEPTION OF INSECURITY



Percezione insicurezza
Perception of insecurity

- Zona o luogo segnalati
Reported area or place
- Indice di Insicurezza
Insecurity index

WHY GIRLS DON'T GO TO THE PARK?



PARKS FOR EVERYONE

Bruno Kreisky Park, Vienna

Vienna has developed more than **60 pilot projects** in the city to solve this type of situation, involving citizens, and in particular girls.

PARKS FOR EVERYONE

Bruno Kreisky Park, Vienna

**Parks and squares are equipped with public toilets,
free of charge from 8pm to 10am,
and always free for the under 14s.**

ANTI-VIOLENCE NETWORK



Rete antiviolenza
Anti-violence network



Centri antiviolenza
Public and private nursery schools



PUBLIC REPRESENTATION

PARMA
ATLANTE DI GENERE



FEMININE TOPONYMY



Toponomastica femminile
Female Toponymy

— Vie, piazze e parchi
Streets, squares and parks

WOMEN AND PUBLIC SPHERE



A woman in a white dress is riding a yellow bicycle with a child seat in a park. The child seat is blue and has a pink helmet on it. The woman is holding a basket with a drink. In the background, there are trees, a black trash can with a white logo, and a person sitting on a bench. The text 'SPACE IS NOT NEUTRAL' is overlaid in a white box with maroon letters. Below it, a quote by Teresa Boccia is also overlaid in a white box with black letters.

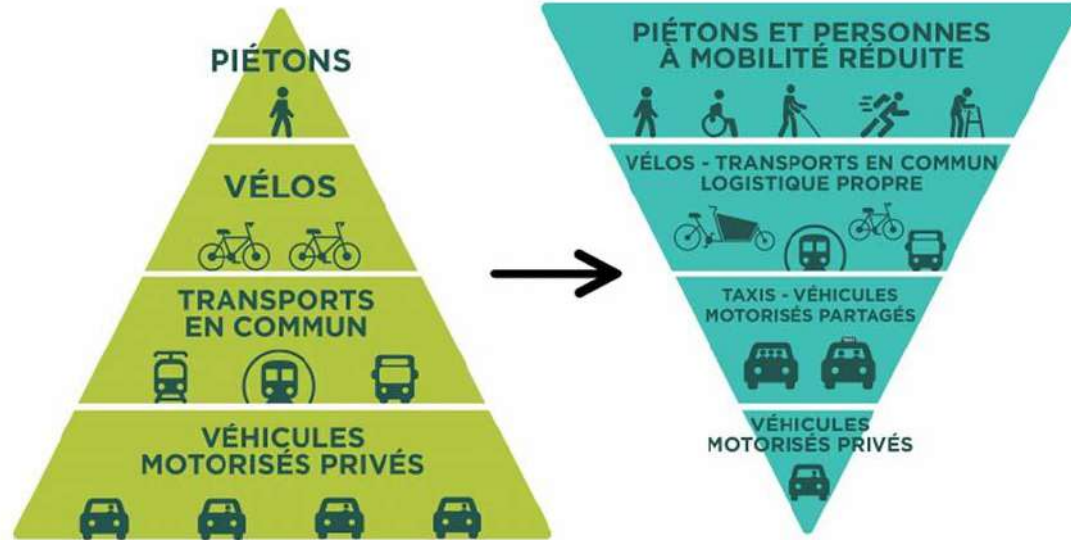
SPACE IS NOT NEUTRAL

«Space is not neutral: it is **inhabited by sexualized bodies** which have **different experiences of the city**, with differences in the ways of **living** and of **moving** through the city.

This difference is evident in **all stages of life** and according to the **different abilities»**

Teresa Boccia, 2016

15 MINUTES CITY



«We must **overcome** that **functionalist disposition** that tells us that here we buy, here we study, here we live ..., and we bet on a city where all these functions are intertwined in everyday life, a **model of proximity** that allows you to buy, study and take care within the same urban space».

Adriana Ciocoletto, Col·lectiu Punt 6

QUALITATIVE TOOLS



The implementation of a **participatory process** on the perception of **insecurity**, along with a **qualitative study** on **mobility**, will help to explore the topics addressed by the Atlas in greater depth.



EXPLORATORY WALKS



A DIGITAL TOOL FOR A GENDER-SENSITIVE CITY

In **Parma**, the Atlas will be available both in print and, primarily, in **digital format**. A web-app will serve as the **tool** that includes a **mapping** of all identified services, along with the **reports** produced as part of the project.

**SEX
AND THE
CITY**

Thank you!

www.sexandthecity.space

genderatlas@gmail.com

[@sexandthecity.milano](#) 

[@sexandthecity.2020](#) 

c.f. 97914640152